

July 2014

See™ GROUPS

WE TALK TO SHAUN ESCOFFERY WHO IS STARRING AS MUFASA IN DISNEY'S THE LION KING

WIN

TICKETS TO SEE THE WOMAN IN BLACK, WHICH IS CELEBRATING 25 YEARS IN THE WEST END!

DISNEY'S
THE LION KING



ONCE IS THE EXHILARATING, OLIVIER AWARD WINNING SHOW THAT WILL CAPTURE YOUR HEART LIKE NO OTHER. A BITTERSWEET AND FUNNY LOVE STORY THAT CELEBRATES THE POWER OF MUSIC, PERFORMED LIVE ON STAGE BY AN EXTRAORDINARY CAST OF ACTOR-MUSICIANS, ONCE DAZZLES WITH INVENTION, WIT AND UNFORGETTABLE SONGS.

With critics raving and audiences in raptures it's no wonder this smash-hit received six prestigious Olivier Award nominations, including "Best New

Musical", and was deserved winner of the "Award for Outstanding Achievement in Music". A truly original story that refuses to play by the rules, Once is based on the much-loved 2007 movie that won the Oscar for Best Original Song, the beautifully stirring Falling Slowly, written by Glen Hansard and Markéta Irglová. The Academy-Award winning duo have returned to write the music and lyrics for the show, and with a book by award winning Irish playwright Enda Walsh, the show is an extraordinary marriage of heartfelt emotion, electrifying music and razor-sharp humour.

With the irresistibly joyous atmosphere of a real live Irish ceildh live on stage and an innovative stage design unlike any other in the West End, this isn't just great theatre, it's a great night out too! And did we mention the on-stage bar?

With 10+ groups from just £25 - book now!



Disney PRESENTS
THE LION KING

We talk to **Shaun Escoffery** who currently plays Mufasa in **Disney's The Lion King** at the Lyceum Theatre, London.

Can you tell me a bit about Mufasa and how he fits into the story of The Lion King?

Mufasa is a father, husband and warrior king. He is kind and full of tradition and integrity. He cares passionately for his family, his son and homeland and will protect them with his life.

What aspects of Mufasa do you see in yourself - if any?

I'm traditional, loyal and love my family and friends. And also I can relate to Mufasa as I'm a father also.

Did you undertake any special preparations or research for playing the part?

I looked into African culture, traditions etc, but also concentrated on the fact that this is a story of a father and son. So I need to bring out the truth within that relationship.

What is your favourite song in The Lion King and why?

The Circle Of Life is by far my favourite song. It's sung at the beginning of the show, it's the opening number. It moves me every night and the

reaction from the audience as I look out is quite overwhelming, I've seen many brought to tears.

What is your favourite moment on stage and why?

The Lioness chant is my favourite moment. The choreography is second to none, the harmonies are amazing. I never get tired of seeing it.

You perform almost eight shows a week which must be extremely tiring. What do you do to keep yourself fresh and fit for the show?

It helps that I enjoy what I do. But I try and keep myself busy outside. I study Brazilian Jiu-Jitsu twice a week. Go to the gym and try and eat well and healthy. (As much as I can)

What do you love about performing in Disney's The Lion King?

What I love about performing at The Lion King apart from loving what I do with a passion. It's the family atmosphere in the building. I've made some amazing friends, friends for life. It really is my second home.



GROUP TICKETS FROM £29.50
See listings for details

Photo by Simon Turfitt. ©Disney

WELCOME!

2014 is shaping up to be a fantastic year for the West End.

Already in the last couple of months **Miss Saigon** has opened, **The Curious Incident of the Dog in the Night Time** has reopened at the Gielgud Theatre and the eagerly anticipated **Shakespeare in Love** has begun previews! After exciting launches **Made in Dagenham the Musical** and **Memphis the Musical** are set to be incredible additions to the West End this October. On top of all this excitement, it has been announced that limited runs of **Cats** and **Evita** will open this winter, making this one of the most thrilling years for the West End!

from the See Groups Team

COMPETITION

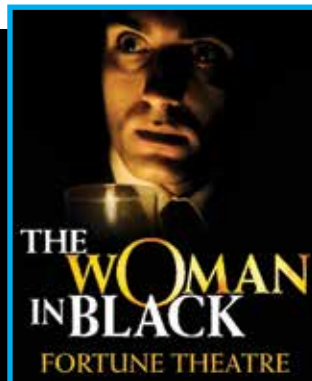
To win a pair of tickets for **The Woman in Black** just answer the following question:

WHO WROTE THE GOTHIC NOVELLA WHICH THE PLAY IS BASED ON?

Submit your name and contact details with the subject line "The Woman in Black Competition" via email to competitions@seetickets.com to be entered into the prize draw.

T and Cs

Tickets are valid for Tuesday to Thursday performances until 28 August. Tickets are subject to availability, exclusions apply and cannot be exchanged for monetary value. Performance schedule is subject to change without notice and travel and any additional expenses incurred are not included. Please note that the closing date for the competition is 31st July 2014 at 11:59pm.



THE WOMAN IN BLACK

THE WOMAN IN BLACK IS A GRIPPING THEATRICAL EXPLORATION OF TERROR, 'A MASTERPIECE' (THE GUARDIAN) THAT'S BEEN THRILLING AUDIENCES OF ALL AGES WITH ITS UNIQUE BLEND OF SUSPENSE, DRAMA AND BOLD STAGECRAFT.



Now celebrating 25 years in the West End, **THE WOMAN IN BLACK** is 'a marvellous exercise in tension, spun from perfectly paced storytelling' (The Independent) that has enthralled over 7 million people since its original debut.

Feel the power of **THE WOMAN IN BLACK** for yourself and experience the 'most brilliantly effective spine-chiller you will ever encounter' (The Daily Telegraph).

“Once
HAS IT ALL
Heart, Soul, Beauty,
COMEDY & PERFECT,
PERFECT MUSIC”

OfficialTheatre.com

Once
the revolutionary new musical

GREAT RATES FOR GROUPS 10+
phoenix theatre | london

WORLD PREMIERE OF THE EPIC NEW SPECTACLE

FLATLEY
LORD OF THE DANCE
DANGEROUS GAMES

FEATURING MICHAEL FLATLEY IN HIS FINAL WEST END PERFORMANCES

GREAT RATES FOR GROUPS OF 6+

LONDON PALLADIUM 8 WEEKS ONLY
1 September – 25 October

‘LONDON’S
Golden
TICKET’

Matthew Henley, BBC RADIO LONDON

Roald Dahl’s
CHARLIE
AND THE CHOCOLATE FACTORY
The New Musical

GROUPS OF 12+ TOP PRICE SEATS JUST £45.00*

*Valid on seats up to face value £67.50. Valid Mon-Fri evening & Wed matinee performances. Subject to availability & excluding certain school holidays. Other blackout dates may apply.

Wonders await at CharlieandtheChocolateFactory.com

THEATRE ROYAL DRURY LANE

TM © 2014 WBIE

“THIS TALE OF TWO WITCHES IS
SO MAGICAL IT DEFIES BELIEF.”

★★★★★ Daily Mail

GROUPS OF 35+ SAVE UP TO 50%!

WICKED
THE UNTOLD STORY OF THE WITCHES OF OZ

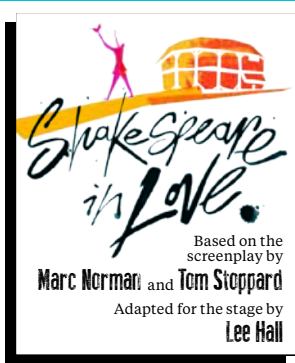
APOLLO VICTORIA THEATRE

© WPL

WHAT DO YOU WANT TO See™?

Covering West End theatre and nationwide exhibitions and events, our experienced and dedicated Groups Team at See Tickets can assist you in all aspects of your booking, whatever your budget. With a fantastic range of discounted rates and long reservation periods for all types of group bookings, including parties of senior citizens, the team will work closely with you to tailor your visit to the specific needs of the group at the best possible price.

CALL 0844 4120 4650 OR EMAIL GROUPS@SEETICKETS.COM TO SPEAK TO A TEAM MEMBER.



SHAKESPEARE IN LOVE

Noel Coward Theatre, London

£20.00
10+ groups

Tormented by writers block Will Shakespeare is in desperate need of a new hit. His search sparks a story of forbidden love which draws even Queen Elizabeth herself into the drama and inspires the greatest love story of all time, Romeo and Juliet. This brand new show promises to transport you back to Shakespeare's London while revelling in the sheer joy of love!

10+ groups save £5 off top 3 prices. (Mon-Thurs, from 1st of September)



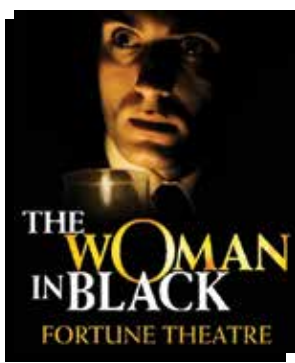
WICKED

Apollo Victoria Theatre

£32.50
35+ groups

Now booking into its 9th spellbinding year, Wicked is a brilliantly witty re-imagining of the stories and characters created by L. Frank Baum in 'The Wonderful Wizard of Oz'. Packed with thrilling technical wizardry, dazzling costumes and show-stopping songs, this award-winning musical is an unforgettable, enchanting experience that is not to be missed.

**35+ groups best available £32.50 (Mon - Thurs)
10+ groups best available £39.50 (Fri Eve & Sat Matinee)**



THE WOMAN IN BLACK

Fortune Theatre

£24.50
8+ groups

Unanimously acclaimed by the critics, Stephen Mallatrat's adaptation of Susan Hill's best-selling novel combines the power and intensity of live theatre with a cinematic quality inspired by the world of film noir. It is a formula that provides audiences with an evening of spine-tingling suspense as they are transported into a terrifying and ghostly world.

**8+ groups best available £24.50 (Mon-Thurs)
8+ groups best available £35.00 (Fri Eve and Sat Matinee)**



THE BOOK OF MORMON

Prince of Wales Theatre, London

£39.50
10+ groups

Winner of 4 2014 Olivier Awards and 9 Tony Awards, including Best Musical. The Book of Mormon is the Broadway musical from South Park creators Trey Parker and Matt Stone and Avenue Q co-creator Robert Lopez. Rolling Stone says: 'The Genii of South Park hit Broadway, and history is made. Mormon is on its march into legend'.

**10+ groups best available £39.50 (Wed Matinees)
10+ groups best available £49.00 (Mon to Thurs Eves)
40+ groups best available £44.00 (Mon to Wed Eves)**



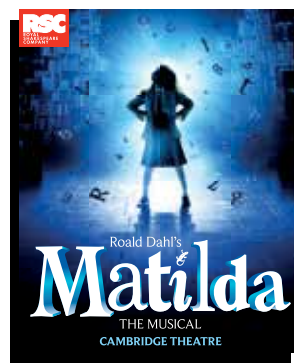
DIRTY ROTTEN SCOUNDRELS THE MUSICAL

Savoy Theatre, London

£29.50
10+ groups

Based on the classic comedy film starring Sir Michael Caine and Steve Martin, be transported to the French Riviera and its decadent underworld, as two seasoned swindlers attempt to hoodwink a millionaire heiress. Sophisticated, suave with a good dash of mischief, Dirty Rotten Scoundrels the Musical stars Robert Lindsay, Rufus Hound and Katherine Kingsley.

**10+ groups best available £29.50 (Mon-Fri B+P by 31st July 2014)
10+ groups best available £35.00 (Mon-Thurs)**



MATILDA THE MUSICAL

Cambridge Theatre

£39.50
40+ groups

The Royal Shakespeare Company's production of Roald Dahl's Matilda The Musical has captured the imagination of young and old alike and continues to play to packed houses at London's Cambridge Theatre. Matilda is the captivating musical masterpiece that revels in the anarchy of childhood, the power of imagination and the inspiring story of a girl who dares to change her destiny.

**40+ groups best available £39.50 (Tues - Thurs)
10+ groups best available £45.00 (Tues - Thurs)
6+ groups best available £52.50 (Tues - Thurs)**



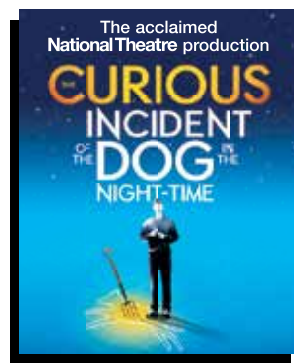
MISS SAIGON

Prince Edward Theatre London

£37.50
10+ groups

Cameron Mackintosh's acclaimed new production has made its highly anticipated return to the West End. This epic love story tells the tragic tale of young bar girl Kim, orphaned by war, who falls in love with an American GI called Chris - but their lives are torn apart by the fall of Saigon.

**10+ groups best available £49.50 (Mon - Thurs)
10+ groups upper circle £37.50 (Mon - Thurs)**



THE CURIOUS INCIDENT OF THE DOG IN THE NIGHT-TIME

Gielgud Theatre

£39.50
10+ groups

The National Theatre's acclaimed production has resumed its West End run at the Gielgud Theatre. The Curious Incident of the Dog in the Night-Time is based on the best-selling novel by Mark Haddon, adapted by Olivier Award-winning playwright Simon Stephens and directed by Olivier and Tony Award-winning director Marianne Elliott.

10+ groups best available £39.50 (Mon - Thurs)



Daily Mail

THE PLAY THAT GOES WRONG

DUCHESS THEATRE
FROM SEPT 5th

THE PLAY THAT GOES WRONG

Duchess Theatre
Fawlty Towers meets Noises Off, this is the smash hit new comedy for 2014! The Cornley Polytechnic Drama Society are putting on a 1920s murder mystery, but as the title suggests, everything that can go wrong... does! The accident-prone thespians battle against all odds to make it through to their final curtain call, with hilarious consequences!

6+ groups best available £35.00 (Mon- Thurs)
10+ groups best available £29.50 (Mon- Thurs)
25+ groups best available £25.00 (Mon- Thurs)

£25.00
6+ groups



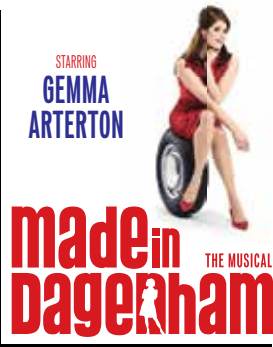
THE PHANTOM OF THE OPERA

Her Majesty's Theatre

Now in its 28th record-breaking year, this multiaward winning musical continues to captivate audiences at Her Majesty's Theatre in London's West End, after more than 11,000 performances. Experience Andrew Lloyd Webber's mesmerising score, along with jaw-dropping scenery and breathtaking special effects that magically combine to bring this tragic love story to life each night.

10+ groups best available £28.00 (Thurs mat)
10+ groups best available £39.75 (Mon-Fri & Sat Mat)

£28.00
10+ groups



MADE IN DAGENHAM

Adelphi Theatre, London

Inspired by a true story and based on the hit movie, Made in Dagenham is the uplifting new West End musical comedy about friendship, love and the importance of fighting for what is right. Funny, touching and timeless, Made in Dagenham shows how ordinary people can do extraordinary things when they stand together.

10+ groups best available £39.50 (Mon - Thurs)
(b+p by 1st of August 2014)
10+ groups best available £45.00 (Mon - Thurs)
40+ groups best available £39.50 (Mon - Thurs)

£39.50
10+ groups



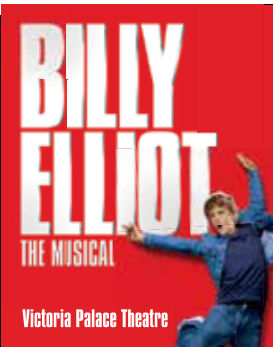
ONCE

Phoenix Theatre
Age Guidance 8+

Based on the much-loved Oscar-winning film, Once is an extraordinary, original and irresistibly joyous celebration of love, friendship and music. When an Irish busker and a young Czech mother meet through a shared love of music, their songwriting sparks a deep connection and a tender, longing romance that neither of them could have expected.

10+ groups upper circle £26.50 (Mon - Fri)
10+ groups best available from £39.50 (Mon - Fri)

£26.50
10+ groups



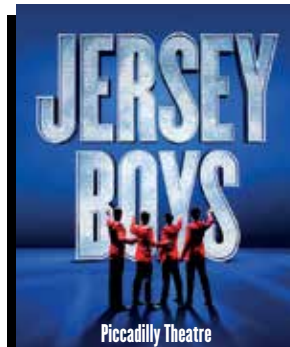
BILLY ELLIOT THE MUSICAL

Victoria Palace Theatre

Billy Elliot the Musical has been dazzling London's West End since 2005, and has gone to captivate audiences around the world. Set against the background of the 1984/1985 miners strike, Billy Elliot is the inspirational story of one young boy's struggle to realise his dream to dance against the odds.

10+ groups best available £30.70 (Mon-Thurs)
10+ groups best available £36.20 (Fri Eve & Sat Mat)

£30.70
10+ groups



JERSEY BOYS

Piccadilly Theatre
Age Guidance 8+

JERSEY BOYS, tells of the remarkable rise to stardom of one of the most successful bands in pop music history, Frankie Valli and the Four Seasons. This sensational smash-hit musical is now the winner of 55 major awards worldwide. With spectacular performances of all their hits, discover the incredible sound of a band whose songs defined the musical identity of a nation.

10+ groups best available £32.50 (Tues - Thurs)
10+ groups best available £37.50 (Fri & Sun)

£32.50
10+ groups



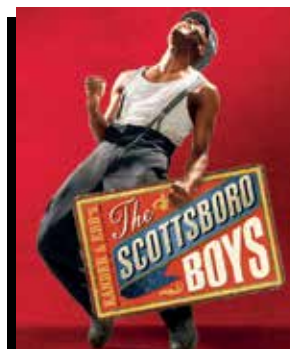
DISNEY'S THE LION KING

Duchess Theatre

Set against the majesty of the Serengeti Plains and to the evocative rhythms of Africa, Disney's multi-award winning musical The Lion King will redefine your group's expectation of theatre. At its heart is the powerful and moving story of Simba - the epic adventure of his journey from wide-eyed cub to his destined role as King of the Pridelands.

35+ groups from £29.50 (Tues - Fri)
10+ groups third price £31.50 (Tues to Fri)
10+ groups best available £45.00 (Tues to Fri)

£29.50
35+ groups



THE SCOTTSBORO BOYS

Garrick Theatre

Following a sold out run at the Young Vic, the critically acclaimed The Scottsboro Boys transfers to the Garrick Theatre for a strictly limited season. Step right up and jump on board for this sensational musical, from the legendary composing duo Kander and Ebb (Chicago, Cabaret), which brings to life the extraordinary true story of nine young men, in a case that changed history forever.

6+ groups best available £39.50 (Mon-Thurs)
12+ groups best available £35.00 (Mon-Thurs)

£35.00
12+ groups

STAGE ENTERTAINMENT
GLASS HALF FULL PRODUCTIONS - JUST FOR LAUGHS THEATRICALS
PRESENT

It's extraordinary
what ordinary
people can do...

STARRING
GEMMA ARTERTON



made in Dagenham

THE MUSICAL

BOOK BY RICHARD BEAN MUSIC BY DAVID ARNOLD LYRICS BY RICHARD THOMAS
DIRECTED BY RUPERT GOOLD
BASED ON THE NUMBER 9 FILMS MOTION PICTURE

ACCELERATOR GROUP RATE £39.50 FOR GROUPS 10+

(Valid on Monday - Thursday performances. Book and pay by 1 August 2014)
All rates subject to availability. Performances, prices, dates and times subject to change without notice.

OPENS OCTOBER 2014 | ADELPHI THEATRE

BEVERLEY KNIGHT KILLIAN DONNELLY



MEMPHIS

THE MUSICAL

BROADWAY'S TONY® AWARD-WINNING 'BEST MUSICAL'

REDUCED PRICE PREVIEWS BEGIN 9 OCTOBER 2014 | GREAT RATES FOR GROUPS OF 10+
SHAFTESBURY THEATRE, LONDON | MemphistheMusicalPreview.com

'HIGH-VOLTAGE
KATHERINE KINGSLEY
ELECTRIFIES, A CLASS ACT'

MAIL ON SUNDAY



SCOUNDRELS

THE MUSICAL

10+ GROUPS ACCELERATOR RATE
BEST AVAILABLE SEATS £29.50

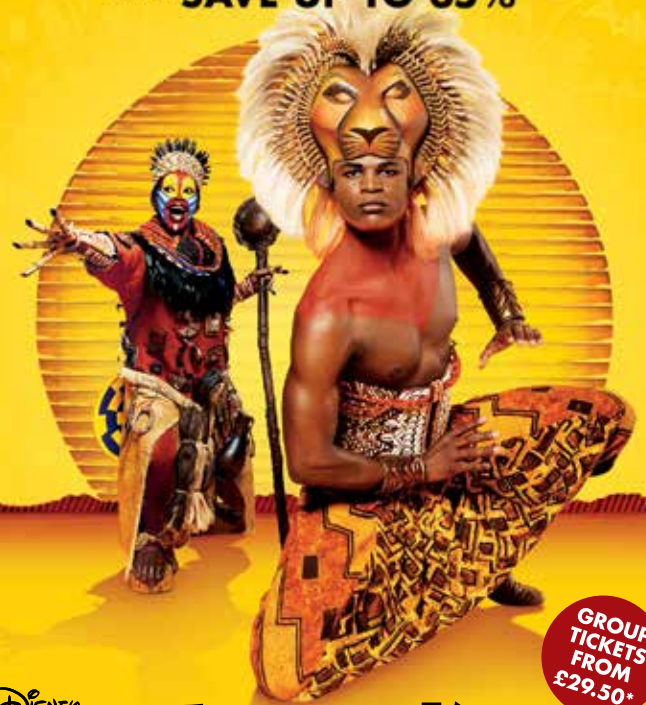
(USUALLY UP TO £67.50)

VALID MONDAY - FRIDAY PERFORMANCES - BOOK AND PAY BY 31ST JULY

NOW PLAYING - SAVOY THEATRE

BOOK YOUR GROUPS TODAY TO EXPERIENCE
'IRRESISTIBLE THEATRICAL MAGIC'
AND SAVE UP TO 35%*

Evening Standard



GROUP
TICKETS
FROM
£29.50*

Disney PRESENTS

THE LION KING

NOW ON SALE EXCLUSIVELY TO GROUPS UNTIL JANUARY 2015

LYCEUM THEATRE, LONDON

*For further details on prices see the back listings page. Photos by Simon Turffe. © Disney.

| SHOW | FULL PRICE | GROUP OFFERS | VALID PERFORMANCES |
|--|---|---|---|
| 1984 (Playhouse, tbc) | £52.50 | 8+ b/a £32.50 | Monday - Thursday |
| 39 Steps, The (Criterion, 2hrs) | £50 (mon-fri)/£52 (sat) | 8+ b/a £19.50 8+ b/a £22.50 | Tues eve & Wed mat Mon, Wed, Thurs - Sat mat |
| Bakersfield Mist (Duchess Theatre, tbc) | £52.50 | 8+ b/a £32.50 | Monday - Thursday |
| Billy Elliot the Musical (Victoria Palace Theatre, 3hrs) | £66.20 (mon-thurs)/£66.70 (sat) | 10+ b/a £30.70/£36.20 SC 10+ b/a £23.70 | Monday-Thursday/ Friday Evening & Saturday Matinee |
| Bodyguard, The (Adelphi Theatre, 2hrs 25 mins) | £67.50 | 6+ b/a £48.50 10+ b/a £39.50 | Monday-Thursday |
| Book of Mormon, The (Prince of Wales, 2hrs 30 mins) | £72.50 | 10+ b/a £49.00 40+ b/a £44.00 10+ b/a £39.50 | Monday-Thursday Monday - Wednesday Evenings Wednesday Matinees |
| Cats (London Palladium, tbc) | £59.50 | 6+ b/a £39.50 10+ b/a £35.00 30+ £29.50 | Monday - Thursday |
| Charlie and the Chocolate Factory (Theatre Royal Drury Lane, 2hrs 30mins) | £67.50 | 12+ b/a £45 40+ b/a £35 | Monday-Friday Monday-Thursday (from 21st April 2014) |
| Commitments, The (Palace Theatre, 2hrs 30 mins) | £62.50 (tues-thurs & sun) £67.50 (fri-sat) | 10+ b/a £39.50 40+ b/a £35.00 10+ b/a £45.00 40+ b/a £39.50 | Sunday - Friday (b+p by 20th July 2014) Sunday - Friday (b+p by 20th July 2014) Sunday - Friday |
| Curious Incident of the Dog in the Night-Time, The (Gielgud from June 2014, 2hrs 45mins) | £59.50 | 10+ b/a £39.50 | Monday - Thursday |
| Dance Til Dawn (Aldwych Theatre, tbc) | £64.45 | 10+ b/a £29.50 10+ b/a £35.00 | Monday - Thursday (b+p 26th September) Monday - Thursday |
| Dirty Rotten Scoundrels The Musical (Savoy Theatre, tbc) | £67.50 | 10+ b/a £29.50 10+ b/a £35.00 10+ SC £29.50 10+ Premium £55.00 | Monday - Friday (B+P by 31st of July) Monday - Friday Monday - Friday Monday - Friday |
| Disney's The Lion King (Lyceum Theatre, 2hrs 30 mins) | £65.50 (tues-fri & sun)/£69.50 (sat) | 10+ b/a £45.50 10+ second price £38.50 10+ third price £31.50 15+ 30% off top 3 prices 35+ 35% off top 3 prices | Tuesday - Friday |
| The Elephantom (New London Theatre, tbc) | £17.00 | 10+ b/a £10.00 | Monday - Friday |
| Evita (Dominion, tbc) | £66.25/£56.25/£46.25 | 10+ b/a £45.00 / 30+ b/a £36.00 10+ b/a £54.00 / 30+ b/a £45.00 | Monday - Thursdays Friday & Saturday Matinee |
| Ghost Stories (The Arts, tbc) | £45 | 6+ b/a £35 8+ b/a £29.50 | Tuesday - Thursday & Sunday |
| Handbagged (Vaudeville, tbc) | £49.50/£52.50 | 8+ b/a £39.50 12+ b/a £35 | Monday - Thursday |
| I Believe in Unicorns (Vaudeville, tbc) | £22.50 | 10+ b/a £12.50 | Valid all performances |
| Importance of Being Earnest, The (Harold Pinter, tbc) | £55.00 | 10+ b/a £37.50 | Monday - Thursday |
| Jeeves and Wooster in Perfect Nonsense (Duke of York's Theatre) | £59.50 | 10+ b/a £39.50 20+ b/a £32.50 | Monday - Thursday |
| Jersey Boys (Piccadilly Theatre, 2hrs 40 mins) | £67.50 | 10+ b/a £32.50 10+ b/a 37.50 40+ b/a £32.50 SC 15+ b/a £27.50 | Tuesday - Thursday Friday & Sunday Friday & Sunday Tuesday-Thursday |
| King Charles III (Wyndhams Theatre, TBC) | £57.50 | 10+ b/a £39.50 | Monday - Thursday |
| Les Miserables (Queens Theatre, 2hrs 50mins) | £67.50 | 10+ b/a £42.50 | Monday - Thursday |
| Let It Be (Garrick Theatre, 2hrs 20mins) | £65.00 | 10+ b/a £29.50 | Monday - Friday Evenings and Weekend Mats |
| Let The Right One In (Apollo Theatre, tbc) | £49.50 | 8+ b/a £35 8+ GC £24.50 20+ b/a £29.50 | Monday - Thursday |
| Made in Dagenham The Musical (Adelphi Theatre from October 2014, tbc) | £69.50 | 10+ b/a £39.50 10+ b/a £45.00 40+ b/a £39.50 | Monday - Thursday (b+p by 1st of August 2014) Monday - Thursday |
| Mamma Mia! (Novello Theatre, 2hrs 45 mins) | £64 (mon-fri)/£67.50 (sat) | 10+ b/a £38.50 | Monday - Friday |
| Matilda The Musical (Cambridge Theatre, 2hrs 40 mins) | £67.50 | 6+ b/a £52.50 10+ b/a £45.00 40+ b/a £39.50 | Tuesday - Thursday (until 2nd of September) Tuesday - Thursday Tuesday - Thursday |
| Memphis the Musical (Shaftesbury Theatre, tbc) | £62.50 (mon-fri)/£67.50 (sat) | 30+ b/a £29.50 10+ b/a £39.50 20+ b/a £35.00 | Monday - Friday (b+p by 30th September 2014) Monday - Friday Monday - Friday |
| Miss Saigon (Price Edward Theatre, 2hrs 40mins, from 3rd of May 2014) | £67.50 £45.00 | 10+ b/a £49.50 10+ 2nd Price £37.50 | Mon - Thurs |
| Once - A New Musical (Phoenix Theatre, 2hrs 30 mins) | £69.50 | 10+ b/a £39.50 10+ w/c £26.50 10+ b/a £45.00 | Monday - Friday Saturday Matinee |
| Pajama Game, The (Shaftesbury Theatre, 2hrs 45mins) | £63 | 6+ b/a £55.00 10+ b/a £29.50 10+ b/a £35.00 10+ b/a £45 | Valid all performances Monday - Thursday Friday Saturday |
| Phantom of the Opera, The (Her Majestys Theatre, 2hrs 30 mins) | £67.50 | 10+ b/a £39.75 10+ b/a £28.00 SC 20+ b/a £26.00 | Mon-Fri/Thurs & Sat Mat Thurs Mat Thurs Mat |
| The Play that Goes Wrong (Duchess Theatre, tbc) | £49.50 | 6+ b/a £35 10+ b/a £29.50 25+ b/a £25 | Sunday - Friday |
| Room on the Broom | | 10+ groups £8.55 | All performances (B+P by Thursday 31st July) |
| The Scottsboro Boys (Garrick Theatre, tbc) | £59.50 | 6+ b/a £39.50 12+ b/a £35.00 | Monday - Thursday |
| Shakespeare in Love (Noel Coward Theatre, tbc) | £57.50, £42.50 & £25 | 10+ £5.00 off top 3 prices | Monday to Thursday (from 1st September 2014) |
| Slava Snow Show | £65.00/£45.00 | 10+ b/a £39.50 | All performances (excl. 17 & 18 December eves, 26 December eve, 29 December to 5 January eves) |
| Speed the Plow (Playhouse Theatre, tbc) | £59.50 | 8+ b/a £45.50 | Monday - Thursday |
| Stomp (Ambassadors Theatre, 1hr 40 mins) | £67.50 | 10+ b/a £20 | Monday & Thursday |
| Sunny Afternoon (Harold Pinter, tbc) | £65.00 | 8+ b/a £42.50 8+ £49.50 | Monday - Thursday (b+p by 6th September 2014) Monday - Thursday |
| The Woman in Black (Fortune Theatre, 2hrs) | £47.50 | 8+ b/a £24.50 8+ b/a £35.00 | Monday - Thursday Friday Evening & Saturday Matinee |
| Thriller Live! (Lyric Theatre, 2hrs 30mins) | £65 | 8+ b/a £29.50 | Tuesday - Thursday & Sunday |
| Urinetown the Musical (Apollo, tbc) | £49.50/£39.50 £59.50/£49.50 | 10+ save £10 off top 2 prices | Monday - Thursday (until 18th of December 2014) Monday - Thursday (5th-22nd of January 2014) |
| War Horse (New London Theatre, 2hrs 40 mins) | £62.50 | 10+ b/a £45.00 40+ b/a £39.50 | All performances (until 18th December. B+P by 31st July) |
| White Christmas (Dominion, tbc) | £68.75 | 12+ Top 3 prices £36.25 12+ Top 3 prices £41.25 8+ b/a £35.00 | All performances (until 18th December. B+P by 31st July) All performances (until 18th December.) Monday -Thursday (B+P by 26th January) |
| Woman on the Verge of a Nervous Breakdown | £59.50 | 8+ premium £52.50 8+ b/a £42.50 8+ SC £35.00 | Monday - Thursday Monday - Thursday Monday - Thursday |
| Wicked (Apollo Victoria, 2hrs 45mins) | £67.50 | 10+ b/a £35.00 35+ b/a £32.50 10+ b/a £39.50 SC 10+ b/a £22.50 | Monday - Thursday Monday - Thursday Friday Evening & Saturday Matinee Wednesday Matinee |

b/a = Best Available, DC = Dress Circle, GC = Grand Circle, UC = Upper Circle, tbc = running time to be confirmed
Please note: All subject to change without notice, please check with operator when booking. Rate correct at time of print. Booking and transaction fees may apply.
Restrictions and exclusions will apply.

See™ GROUPS