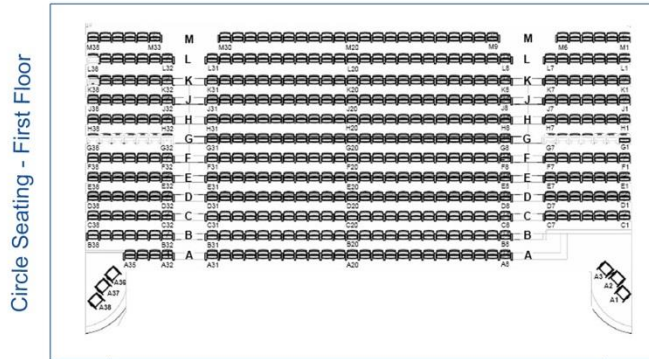


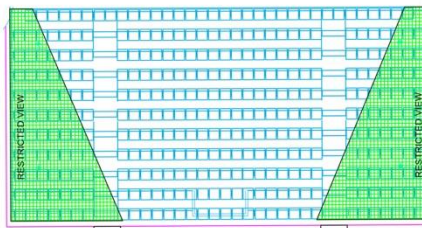
SNOOKER SHOOT OUT

Circle – 441 Seats



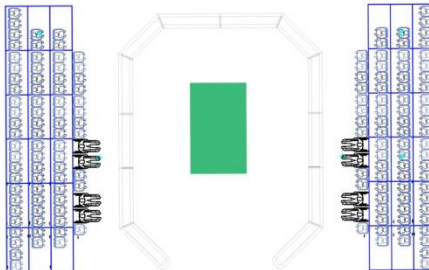
Circle – 441 Seats

Rear Stalls – 238 Seats



Rear Stalls – 238 Seats

Tablesides – 158 Seats



Tablesides – 158 Seats

All seating is unreserved for this event
Watford Colosseum is the home of the 2019 Snooker Shoot Out

 = Accessible wheelchair seating positions

**WATFORD
COLOSSEUM**